



Numerical Simulation of Heat Transfer in a Wavy Enclosure with and without the Presence of Fins

Md. Abdullah Al Mahmud ^a, Md. Jahirul Haque Munshi ^{a*},
Md. Siful Islam ^b, Md. Jamiul Islam ^a, Md. Abdul Mannan ^a
and Md. Mehedi Hasan ^a

^a Department of Mathematics, Hamdard University Bangladesh (HUB), Hamdard City of Science, Education and Culture, Gazaria, Munshigonj-1510, Bangladesh.

^b Department of Electrical and Electronics Engineering, Sonargaon University (SU), Tajgaon, Dhaka-1000, Bangladesh.

Authors' contributions

This work was carried out in collaboration among all authors. All authors read and approved the final manuscript.

Article Information

DOI: 10.9734/ARJOM/2023/v19i9702

Open Peer Review History:

This journal follows the Advanced Open Peer Review policy. Identity of the Reviewers, Editor(s) and additional Reviewers, peer review comments, different versions of the manuscript, comments of the editors, etc are available here: <https://www.sdiarticle5.com/review-history/102010>

Original Research Article

Received: 21/04/2023

Accepted: 24/06/2023

Published: 12/07/2023

Abstract

This study focuses on numerically simulating heat transfer in an enclosure with a wavy shape, both with and without the presence of fins. The research paper specifically investigates the case of a single vertical fin attached to the lower heated wall of the enclosure. The lower wall is maintained at a constant cold temperature, while the upper wall is kept cold, and the wavy walls are assumed to be constant heated temperature. The top wall lid moves left to right and bottom wall lid moves right to left with constant velocity. Additionally, a magnetic field of certain strength is applied parallel to the x-axis. The flow inside

*Corresponding author: Email: jahir.buet.bd@gmail.com, jahirmath@gmail.com;

the enclosure is characterized by a Prandtl number of 0.71. The results are presented through various graphical representations, such as streamlines, isotherms, velocity and temperature distributions, as well as the local Nusselt number. The researchers conducted a parametric study to examine the impact of the Richardson number on the fluid flow and heat transfer characteristics within the enclosure. The findings indicate that as the fluid flow and heat transfer characteristics within the enclosure. The findings indicate that as the Hartmann number increases (while keeping the Hartmann number constant) the heat transfer rate is enhanced. To validate their findings, the researchers compare their results with previously published works in the field.

Keywords: Mixed convection; wavy enclosure; lid-driven and fin.

Nomenclatures

W	:Enclosure height and width
A	:amplitude
N	:number of oscillations
B	:dimensionless fin thickness
g	:gravitational acceleration
h	:fin position
H	:dimensionless fin position
L	:dimensionless fin length
Nu_L	:local Nusselt number
Pr	: Prandtl number
Re	:Reynolds number
Ha	:Hartmann number
Ri	:Richardson number
B_0	:Magnetic field strength
Gr	: Grashof number
u, v	: velocity in x and y direction respectively
U, V	: dimensionless velocity in X and Y direction respectively

x	:horizontal coordinate
X	:dimensionless horizontal coordinate
y	:vertical coordinate
Y	:dimensionless vertical coordinate

Greek Symbols

α	:thermal diffusivity
ρ	:local density
β	:coefficient of thermal expansion
σ	:electrical conductivity
μ	:dynamic viscosity
ν	:kinematic viscosity
θ	:dimensionless temperature

Subscripts

c	:cold
h	:hot

1 Introduction

Computational fluid dynamics (CFD) involves using numerical computations to approximate real-world systems, aiming to enhance the understanding of their performance. Engineering rely on CFD codes that can generate accurate and precise results by discretizing the system into finite grids. CFD encompasses a wide range of applications, from automated engineering design techniques to replacing experimental investigations with detailed solutions of the Navier-Stokes equations for the analysis of intricate fluid flows. Extensive research has been conducted on various cavity shapes in the field of heat transfer. Bilgen [1] numerically investigated “natural convection heat transfer inside a differentially heated cavity with a horizontal fin attached to the hot wall. The study revealed that the heat transfer rate was minimized when the fin was positioned at or near the middle of the heated wall”. Shi and Khodadi [2] studied “steady laminar natural convection heat transfer in a differentially heated square cavity with a thin fin on the hot wall. They discovered that higher Rayleigh numbers resulted in enhanced heat transfer, regardless of the fin’s position or length”. Ben-Nakhi et al. [3] conducted “a numerical investigation on conjugate natural convection in a square enclosure with an inclined thin fin of arbitrary length”. M. Fayz-Al-Asad et al. [4] examined natural convection flow in a hexagonal enclosure with a vertical fin, while in another study [5], they explored MHD free convection heat transfer with a vertical fin in a square wavy cavity. Xu et al. [6] studied “the effect of fins and their height on the transition of natural convection flow in a cavity, observing a transition from steady to periodic unsteady flow near the finned wall at a critical Rayleigh number dependent on the fin length”. Gdhaidh et al. [7] analytically investigated “the enhancement of natural convection heat transfer in a closed enclosure using parallel fins, noting that increasing the number of fins led to a decrease in the maximum temperature of the heat source”. Elatar et al. [8] performed “a numerical study on laminar natural convection inside a square enclosure with an adiabatic horizontal wall and a single horizontal fin attached to different enclosure with an adiabatic horizontal wall and a single horizontal

fin attached to different positions with varying lengths on the hot wall. They examined the influence of Rayleigh number, fin lengths, and fin positions on the fluid flow structure and heat transfer characteristics”. Finally, Fayz-Al-Asad et al. [9] analyzed “the effect of fin length and location on natural convection heat transfer in a wavy cavity”. Saha et al. [10] conducted research “on mixed convection heat transfer in a lid-driven cavity with a wavy bottom surface”. Munshi et al. [11] studied “mixed convection in a square lid-driven with internal elliptic body and constant flux heat source on the bottom wall”. Munshi et al. [12] investigated “numerically the effect of hydrodynamics mixed convection double lid-driven square cavity with inside elliptic heated block”. Ma et al. [13] numerical studied “flows and heat transfer of the transition to an unsteady state in a finned cavity for different Prandtl numbers”. Chen et al. [14] numerical and experimental studies of natural convection in a heated cavity with a horizontal fin on a hot side wall. Pati et al. [15] investigated “the effect of pin-fin thermal performance for staggered and inline arrays at low Reynolds number”.

Based on the literature review conducted and the author’s understanding, there is a scarcity of research focusing on wavy enclosures with vertical fins. Furthermore, no existing studies have numerically simulated mixed convection heat transfer in wavy enclosures, both with and without fins. Hence, the aim of this current study is to investigate the enhancement of heat transfer rate in fluid flowing through wavy enclosures, considering the presence of fins as well as without fins.

The upcoming section of this chapter is organized as follows. To begin with section 1 introduces the specific physical configurations that are relevant to the present study. Subsequently, section 2 provides a detailed discussion on the mathematical model chosen for this research, including the governing equations and boundary conditions. The numerical scheme employed in this study is elucidated in section 3.

2 Physical Configuration

Fig. 1 illustrates the physical model and boundary conditions of the current problem being investigated. It depicts a two-dimensional wavy enclosure with a side length W . The bottom and to walls of the enclosure is maintained at a constant cold temperature T_c . The two sided wavy walls are heated temperature T_h (where $T_h > T_c$). Additionally, a heated fin with a length (l) and thickness (b) is attached to the bottom wall at a position (h). The top wall lid moves left to right with constant velocity $u = U_0$ and bottom wall lid moves right to left with constant velocity $u = -U_0$.

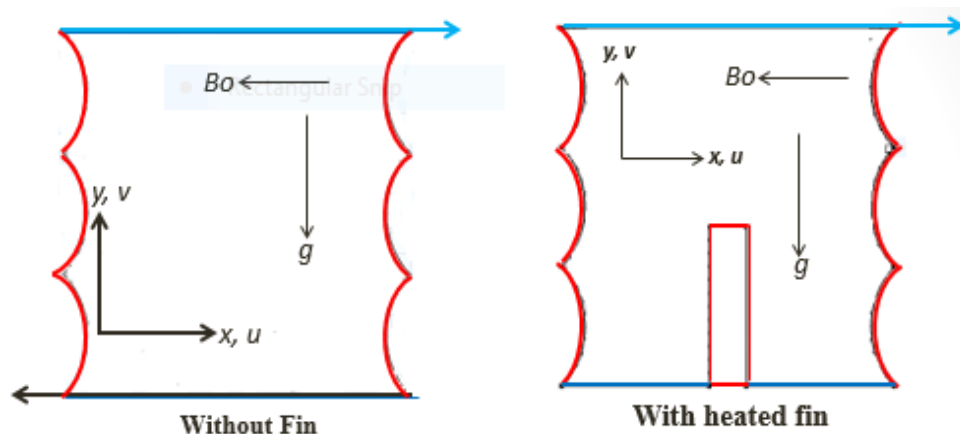


Fig. 1. Schematic view of the enclosure with considered in the present work

3 Mathematical Formulations

The governing dimensional differential equations can be written as:

$$\frac{\partial u}{\partial x} + \frac{\partial v}{\partial y} = 0 \tag{1}$$

$$u \frac{\partial u}{\partial x} + v \frac{\partial u}{\partial y} = -\frac{1}{\rho} \frac{\partial p}{\partial x} + \nu \left(\frac{\partial^2 u}{\partial x^2} + \frac{\partial^2 u}{\partial y^2} \right) \tag{2}$$

$$u \frac{\partial v}{\partial x} + v \frac{\partial v}{\partial y} = -\frac{1}{\rho} \frac{\partial p}{\partial y} + \nu \left(\frac{\partial^2 v}{\partial x^2} + \frac{\partial^2 v}{\partial y^2} \right) - \sigma B_0^2 v + g\beta(T - T_c) \tag{3}$$

$$u \frac{\partial T}{\partial x} + v \frac{\partial T}{\partial y} = \alpha \left(\frac{\partial^2 T}{\partial x^2} + \frac{\partial^2 T}{\partial y^2} \right) \tag{4}$$

The variables used in the mathematical model are as follows: u and v represent the velocity components in the x and y directions, respectively. p denotes the pressure, ρ represents the density, μ is the dynamic viscosity, β is the coefficient of thermal expansion, σ is the electrical conductivity, B_0 signifies the magnetic field, T indicates the temperature, g represents the gravitational force, and α represents the thermal diffusivity.

Dimensional boundary conditions:

On the top wall: $u = U_0, v = 0, T = T_c$

On the bottom wall: $u = -U_0, v = 0, T = T_c$

On the left wavy wall: $u = 0, v = 0, T = T_h$

On the right wavy wall: $u = 0, v = 0, T = T_h$

For the Fin surface: $0 \leq x \leq l; x = h + \frac{b}{2}$ and $x = h - \frac{b}{2}; u = v = 0$

By employing the subsequence set of dimensionless parameters, the original governing equations in their dimensional form can be transformed into dimensionless equations.

$$X = \frac{x}{W}; Y = \frac{y}{W}; U = \frac{uW}{\alpha}; V = \frac{vW}{\alpha}; P = \frac{pW^2}{\rho\alpha^2}; \theta = \frac{T - T_c}{T_h - T_c}; H = \frac{h}{W}; L = \frac{l}{W} \text{ and} \tag{5}$$

$$B = \frac{b}{W}$$

Incorporating the dimensionless variables into equations (1) to (4), where X and Y represent the coordinates along the horizontal and vertical directions, respectively, U and V denotes the dimensionless velocity components in the X and Y directions, θ represents the dimensionless temperature, and P signifies the dimensionless presser, the resulting set of equations in their dimensionless for can be obtained.

$$\frac{\partial U}{\partial X} + \frac{\partial V}{\partial Y} = 0 \tag{6}$$

$$U \frac{\partial U}{\partial X} + V \frac{\partial U}{\partial Y} = -\frac{\partial P}{\partial X} + Pr \left(\frac{\partial^2 U}{\partial X^2} + \frac{\partial^2 U}{\partial Y^2} \right) \tag{7}$$

$$U \frac{\partial V}{\partial X} + V \frac{\partial V}{\partial Y} = -\frac{\partial P}{\partial X} + Pr \left(\frac{\partial^2 V}{\partial X^2} + \frac{\partial^2 V}{\partial Y^2} \right) - Ha^2 Pr V + Ri Pr \theta \tag{8}$$

$$U \frac{\partial \theta}{\partial X} + V \frac{\partial \theta}{\partial Y} = \left(\frac{\partial^2 \theta}{\partial X^2} + \frac{\partial^2 \theta}{\partial Y^2} \right) \tag{9}$$

The transformed dimensionless boundary conditions are as follows:

On the top wall: $U = 1, V = 0, \theta = 0$

On the bottom wall: $U = -1, V = 0, \theta = 0$

On the left vertical wall: $U = 0, V = 0, \theta = 1, 1 - A(1 - \cos(2N\pi X))$

On the right vertical wall: $U = 0, V = 0, \theta = 1, A(1 - \cos(2N\pi X))$

For the fin surface: $0 \leq X \leq L; X = H + \frac{B}{2}$ and $X = H - \frac{B}{2}; U = V = 0$

Nusselt Number: First, the heat transfer by conduction was equated to the heat transfer by convection

$$h^* \Delta T = -k \frac{\partial T}{\partial n} \tag{10}$$

where n is the normal distance to coordinate surface. By introducing the dimensionless variables, defined in equation (5) into equation (11), local Nusselt number is defined as:

$$Nu_L = -\frac{\partial \theta}{\partial N} \Big|_{surface} \tag{11}$$

4 Numerical Technique

The nonlinear governing partial differential equations are transferred into a system of integral equations by using the Galerkin weighted residual finite-element method. The integration involved in each term of these equations is performed with the aid of Gauss quadrature method. The nonlinear algebraic equations so obtained are modified by imposition of boundary conditions. These modified nonlinear equations are transferred into linear algebraic equations with the aid of Newton’s method. Lastly, Triangular factorization method is applied for solving those linear equations.

4.1 Program validation

Comparison between streamlines and isotherms for graphical solution are shown in Fig. 2. It is clear from the figures that there is an excellent agreement between two results.

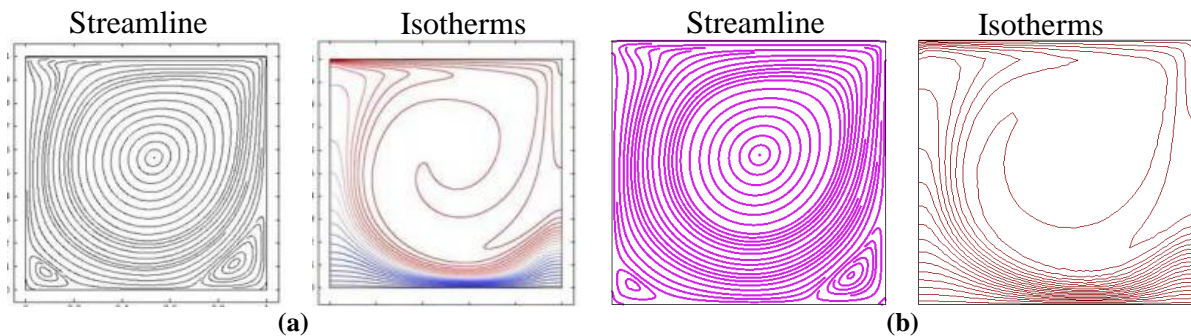


Fig. 2. Comparison between isotherms and streamlines for numerical solution of (a) Shaha et al. [10] $Ra = 10^5, Re = 100, Ha = 50$ and (b) Present Study

5 Results and Discussion

This section presents the numerical simulation results of mixed convection heat transfer in a wavy enclosure, both without a fin and with a fin. The results are obtained for various Richardson numbers, considering the presence and absence of a fin. The findings of this parametric study are illustrated in Figs. 3 to 7.

Fig. 3 depicts the influence of the Richardson number ($Ri = 0.1, 1, 5, 10$) on the streamlines while Fig. 4 demonstrates the effects on the isotherms in the present numerical investigation. For the given parameters $Ha = 50$ and $Pr = 0.71$, the Richardson number quantifies the relative importance of combined forced and free convection. Analyzing Fig. 3, it is observed that when $Ri = 0.1$, the buoyancy force inside the enclosure is considerably strong. This results in the formation of a single vortex generated by the movement of the lid wall when a fin is present, while without a fin, the streamlines become intensified near the upper and lower walls, forming a vortex in the middle region of the enclosure. Furthermore, for a Richardson number of $Ri = 1$, the flow structure exhibits similarities to the case of $Ri = 0.1$, with the presence of two vortices inside the enclosure. One vortex is dominant, while the other is a minor vortex. As the Richardson number increases further

($Ri = 5$ and $Ri = 10$), the buoyancy force becomes even more pronounced. In this scenario, two vortices are observed, with one moving along the right half and the other along the left half of the enclosure.

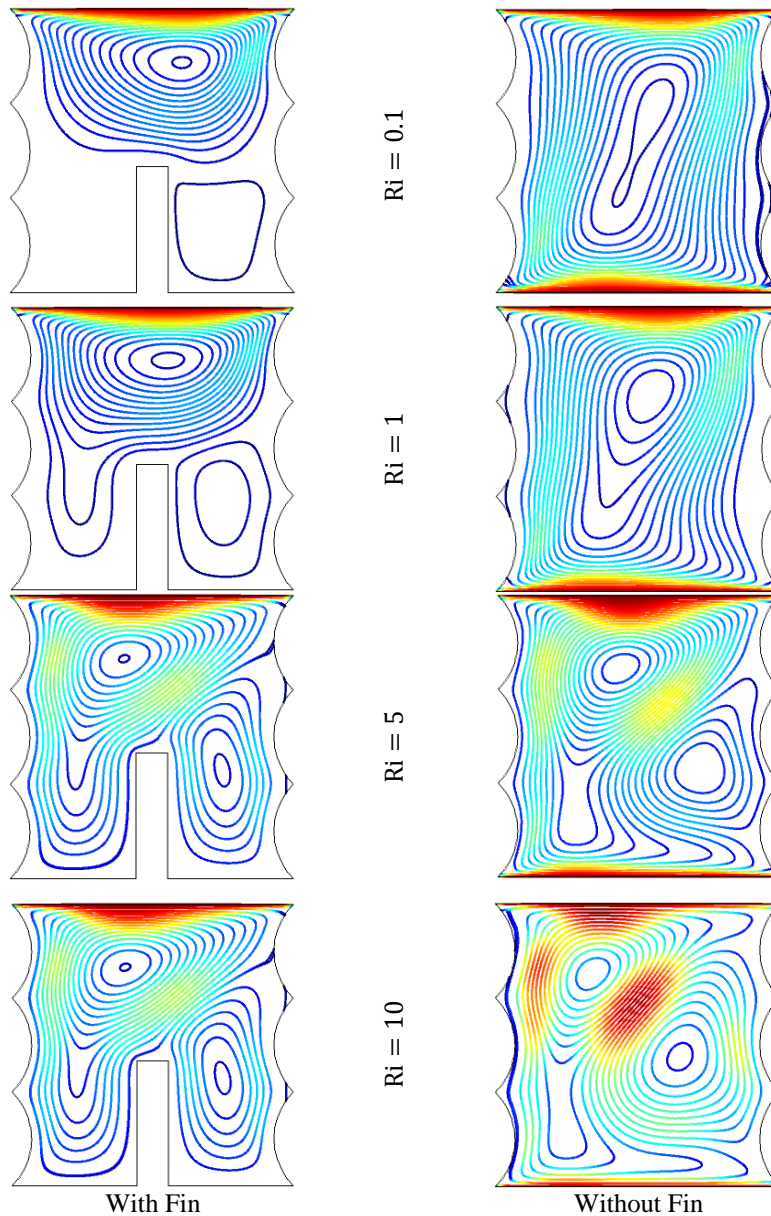


Fig. 3. Streamlines with fin for Richardson number $Ri = 0.1, 1, 5, 10$ while $Ha = 50$ and $Pr = 0.71$

The observed phenomenon can be attributed to the significant influence of the Richardson number on the buoyancy force, which plays a crucial role in shaping the flow field. As indicated by the isotherms shown in Fig. 4, the presence of a thick thermal boundary layer is evident near the heated walls (top and bottom walls) and the surface of the fin when the Richardson number is low ($Ri = 0.1$). However, as the Richardson number increases ($Ri = 10$), these thermal boundary layers become thinner. Additionally, the curvature of the isotherms intensifies with higher Richardson numbers, causing the heat lines to converge towards the vertical wavy walls and the fin surface. This behavior signifies an enhancement in heat transfer through convection mechanisms.

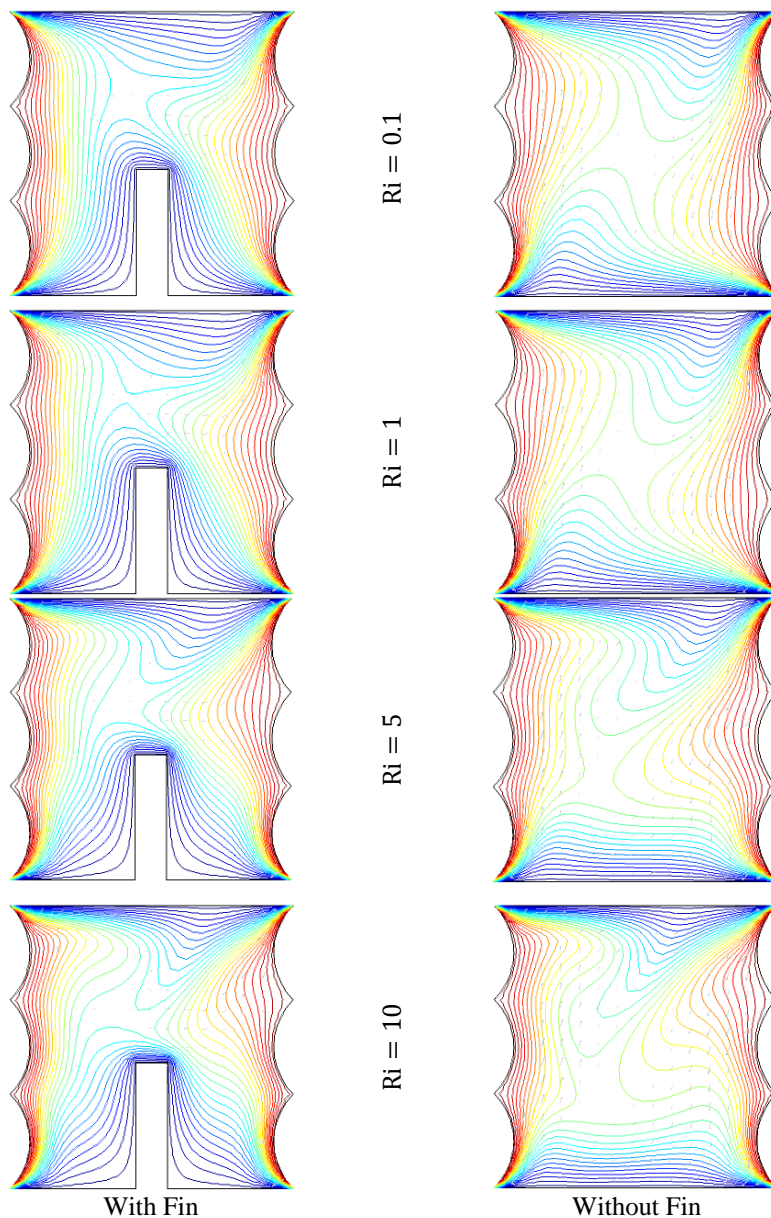


Fig. 4. Isotherms with fin for Richardson number $Ri = 0.1, 1, 5, 10$ while $Ha = 50$ and $Pr = 0.71$

The impact of the Richardson number on the vertical component of velocity profiles along the horizontal center line of the enclosure is illustrated in Fig. 5 for $Ha = 50$ and $Pr = 0.71$. From the Fig. 5, it is observed that lower values of the Richardson number result in smaller changes in the velocity profiles. However, as the Richardson number increases, the velocity profiles undergo larger variations. Furthermore, with an increase in the Richardson number, the absolute values of both the maximum and minimum velocity also increase.

Fig. 6(a) displays the variation of the local Nusselt number along the horizontal wall for different Richardson numbers in the presence of a fin. The figure reveals that while the changing rate of the local Nusselt number is similar for each Richardson number, it differs from one Richardson number to another. Additionally, the local Nusselt number exhibits two concave-up regions and one concave-down region for every Richardson number. In Fig. 6(b), the distribution of the local Nusselt number along the horizontal wall of the enclosure for varying Richardson numbers is shown. It is evident from the figure that the local Nusselt number increases as the Richardson number increases across a significant portion of the bottom heated wall. However, at the middle

section of the bottom wall, the local Nusselt number remains zero and does not vary significantly with changes in the Richardson number.

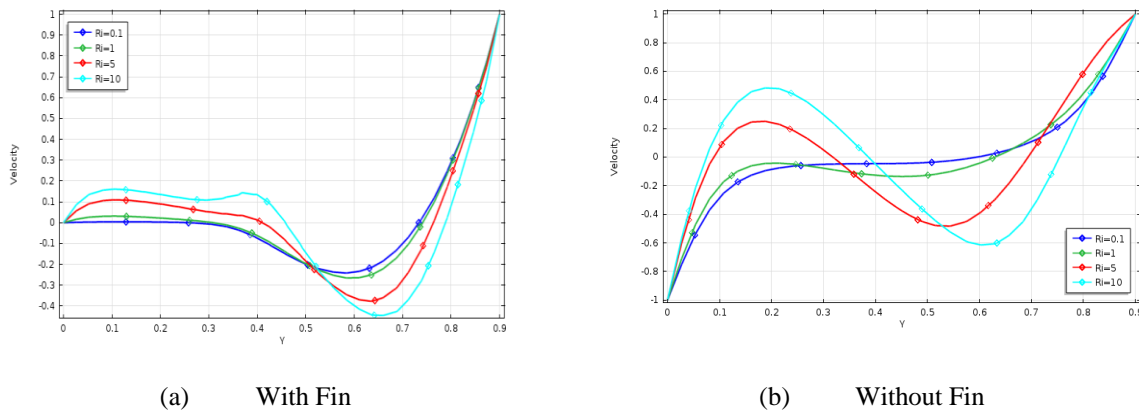


Fig. 5. Variation of the velocity components along the horizontal line for different Richardson numbers $Ri = 0.1, 1, 5, 10$, while $Re = 100, Gr = 10000, Ha = 50$ and $Pr = 0.71$

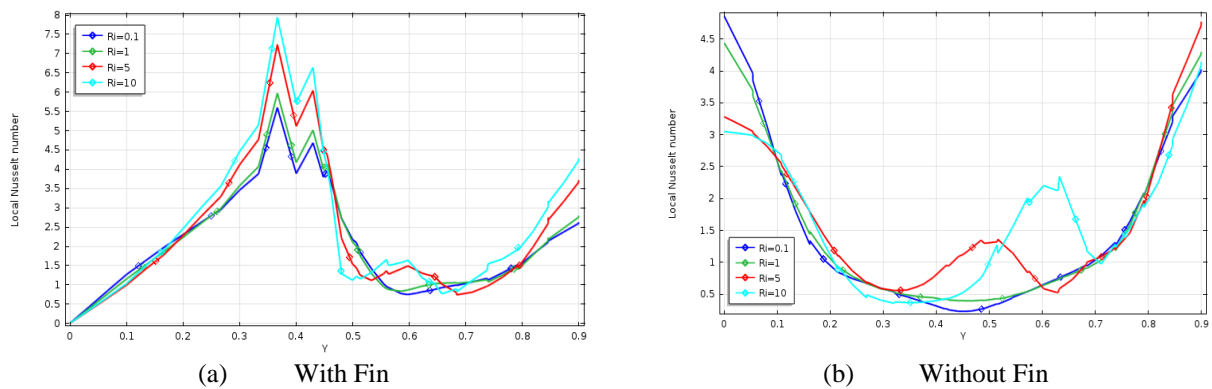


Fig. 6. Variation of the local Nusselt number along the horizontal line for different Richardson numbers $Ri = 0.1, 1, 5, 10$, while $Ha = 50$ and $Pr = 0.71$

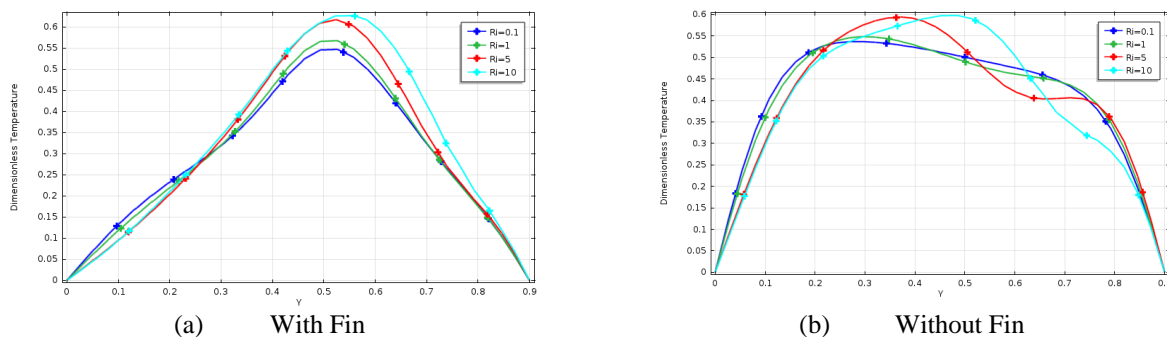


Fig. 7. Variation of the dimensionless temperature along the horizontal line for different Richardson numbers $Ri = 0.1, 1, 5, 10$, while $Re = 100, Gr = 10000, Ha = 50$ and $Pr = 0.71$

Fig. 7(a) illustrates the variations of the dimensionless temperature along the horizontal wall for different Richardson numbers in the presence of a fin, while Fig. 7(b) represents the same for the case without a fin. It can be observed from both figures that for all Richardson numbers, the dimensionless temperature profiles exhibit a concave-up shape.

6 Conclusion

Numerical simulation of heat transfer in a wavy enclosure with and without the presence of fins. Very good agreements were observed with and without fin. Based on the findings, it can be concluded that:

- Velocity, temperature as well as heat transfer rate increased with the increasing Richardson number.
- For all cases considered, two counter rotating eddies were formed inside the enclosure regardless the Richardson number.
- Heat transfer is significantly enhanced when fins are heated compared to when they are not present.

Competing Interests

Authors have declared that no competing interests exist.

References

- [1] Bilgen E. Natural convection in cavities with a thin fin on the hot wall. *International Journal of Heat and Mass Transfer*. 2005;48:3493-3505.
- [2] Shi Xu, Khodadadi JM. Laminar natural convection heat transfers in a differentially heated square cavity due to a thin fin on the hot wall. *ASME Journal of Heat Mass and Transfer*. 2003;125:624-634.
- [3] Ben-Nakhi A, Chamkha AJ. Conjugate natural convection in a square enclosure with inclined thin fin of arbitrary length. *International Journal of Thermal Sciences*. 2007;46:467-478.
- [4] Fayz-Al-Asad M, Sarker MMA, Munshi MJH,. Numerical investigation of natural convection flow in a hexagonal enclosure having vertical fin, *Journal of Scientific Research*. 2019;11(2):173-183. Available:www.banglajol.info/index.php/JSR
- [5] Md. Fayz-Al-Asad MMA, Sarker M. Jahirul Haque Munshi MHD. Free convection heat transfer having vertical fin in a square wavy cavity. *International Journal of Statistics and Applied Mathematics*. 2019;4(1):191-202.
- [6] Xu F, Patterson JC, Lei C. Effect of fin length on natural convection flow transition in a cavity”, *International Journal of Thermal Sciences*. 2013;70:92-101.
- [7] Gdhaidh FA, Hussain K, Qi HS. Enhancement of natural convection heat transfer within closed enclosure using parallel fins. *International Journal of Mechanical Aerospace Industrial and Mechatronics Engineering*. 2015; 9:355-360.
- [8] Elatar A, Teamah MA, Hassab MA. Numerical study of laminar natural convection inside square enclosure with single horizontal fin. *International Journal of Thermal Sciences*. 2016;99:41-51.
- [9] Md. Fayz-Al-Asad, Munshi MJH, Md. Manirul Alam Sarker. Effect of fin length and location on natural convection heat transfer in a wavy cavity. *International Journal of Thermofluid Science and Technology*. 2020;7(3).
- [10] Saha LK, Somadder MC, Uddin KMS. Mixed convection heat transfer in a lid driven cavity with wavy bottom surface”, *American Journal of Applied Mathematics*. 2013;1:92-101.
- [11] Munshi MJH, Alim MA, Ali M, Alam MS. A numerical study on mixed convection in a square lid-driven with internal elliptic body and constant flux heat source on the bottom wall. *J. Sci. Res*. 2017;9:145- 158.
- [12] Munshi et al. Investigated numerically the effect of hydrodynamics mixed convection double lid-driven square cavity with inside elliptic heated block.

- [13] Ma J, Xu F, Saha SC. Flows and heat transfer of the transition to an unsteady state in a finned cavity for different Prandtl numbers. *Int. Commun. Heat Mass Transf.* 2017;88:220-227.
- [14] Han-Taw Chen, Ming-Chung Lin and Jiang-Ren Chang .Numerical and experimental studies of natural convection in a heated cavity with a horizontal fin on a hot side wall. *Int. J. Heat Mass Transf.* 2018;124:1217-1229.
- [15] Pati B, Sharma B, Palo A, Barman RN. Numerical investigation of pin-fin thermal performance for staggered and inline arrays at low Reynolds number. *Int. J. Heat Tech.* 2018;36:697-703.

© 2023 Al Mahmud et al.; This is an Open Access article distributed under the terms of the Creative Commons Attribution License (<http://creativecommons.org/licenses/by/4.0>), which permits unrestricted use, distribution, and reproduction in any medium, provided the original work is properly cited.

Peer-review history:

The peer review history for this paper can be accessed here (Please copy paste the total link in your browser address bar)

<https://www.sdiarticle5.com/review-history/102010>