



# TUB and ZNF532 Promote the Atoh1-Mediated Hair Cell Regeneration in Mouse Cochleae

Zhenhang Xu<sup>1,2</sup>, Vikrant Rai<sup>1†</sup> and Jian Zuo<sup>1\*</sup>

<sup>1</sup>Department of Biomedical Sciences, Creighton University School of Medicine, Omaha, NE, United States, <sup>2</sup>Department of Otolaryngology, Xiangya Hospital, Central South University, Changsha, China

## OPEN ACCESS

### Edited by:

Isabelle Lihmann,  
Institut National de la Santé et de la  
Recherche Médicale (INSERM),  
France

### Reviewed by:

Mhamed Grati,  
National Institutes of Health (NIH),  
United States  
Renjie Chai,  
Southeast University, China

### \*Correspondence:

Jian Zuo  
jianzuo@creighton.edu

### † Present address:

Vikrant Rai  
Department of Translational  
Research, Western University of  
Health Sciences, Pomona, CA,  
United States

### Specialty section:

This article was submitted to  
Cellular Neurophysiology  
a section of the journal  
Frontiers in Cellular Neuroscience

**Received:** 16 August 2021

**Accepted:** 15 October 2021

**Published:** 08 November 2021

### Citation:

Xu Z, Rai V and Zuo J (2021) TUB and ZNF532 Promote the Atoh1-Mediated Hair Cell Regeneration in Mouse Cochleae. *Front. Cell. Neurosci.* 15:759223. doi: 10.3389/fncel.2021.759223

Hair cell (HC) regeneration is a promising therapy for permanent sensorineural hearing loss caused by HC loss in mammals. Atoh1 has been shown to convert supporting cells (SCs) to HCs in neonatal cochleae; its combinations with other factors can improve the efficiency of HC regeneration. To identify additional transcription factors for efficient Atoh1-mediated HC regeneration, here we optimized the electroporation procedure for explant culture of neonatal mouse organs of Corti and tested multiple transcription factors, Six2, Ikzf2, Lbh, Arid3b, Hmg20 a, Tub, Sall1, and Znf532, for their potential to promote Atoh1-mediated conversion of SCs to HCs. These transcription factors are expressed highly in HCs but differentially compared to the converted HCs based on previous studies, and are also potential co-reprogramming factors for Atoh1-mediated SC-to-HC conversion by literature review. P0.5 cochlear explants were electroporated with these transcription factors alone or jointly with Atoh1. We found that Sox2+ progenitors concentrated within the lateral greater epithelial ridge (GER) can be electroporated efficiently with minimal HC damage. Atoh1 ectopic expression promoted HC regeneration in Sox2+ lateral GER cells. Transcription factors Tub and Znf532, but not the other six tested, promoted the HC regeneration mediated by Atoh1, consistent with previous studies that Isl1 promotes Atoh1-mediated HC conversion *in vivo* and *in vitro* and that both Tub and Znf532 are downstream targets of Isl1. Thus, our studies revealed an optimized electroporation method that can transfect the Sox2+ lateral GER cells efficiently with minimal damage to the endogenous HCs. Our results also demonstrate the importance of the Isl1/Tub/Znf532 pathway in promoting Atoh1-mediated HC regeneration.

**Keywords:** hearing loss, hair cell, regeneration, transcription factors, atoh1

## INTRODUCTION

Hearing loss is one of the most common impairments affecting approximately 1.57 billion people worldwide, and there are 403.3 million people who still have moderate or severe hearing loss after adjusting for hearing aid use (Haile et al., 2021). Hair cells (HCs) in the inner ear play an essential role in converting mechanical movement to neural signals for hearing and balance (Youm and Li, 2018). HC death is the main pathology for hearing impairment and loss of HCs is one of the major causes of permanent sensorineural hearing loss in mammals. Non-mammalian vertebrates

such as zebrafish, birds, and frogs still retain the capacity for the spontaneous regeneration of HCs. However, HCs in mature mammalian cochleae don't regenerate spontaneously after damage (Zheng and Zuo, 2017).

HC regeneration is regarded as an ideal solution for complete hearing repair. In non-mammalian vertebrates, replacement of auditory and vestibular HCs occurs over a long period after birth. Supporting cells (SCs) are the source of newly generated HCs; direct transdifferentiation and mitotic regeneration are two main mechanisms of spontaneous HC regeneration (Cox et al., 2014). The basic helix-loop-helix (BHLH) transcription factor (TF) *Atoh1* is a crucial player for HC development and regeneration (Liu et al., 2012; Whitfield, 2015; Lee et al., 2017). Compared to ectopic expression of *Atoh1* alone, studies have shown that co-activation of *Atoh1* together with other transcription factors (*Pou4f3*, *Gfi1*, *Gata3*, *Nmyc*, etc.) induces more SCs transdifferentiate to HC-like cells, and the newly generated cells are more mature in neonatal and mature murine cochleae (Liu et al., 2012; Walters et al., 2017; Chen et al., 2021), indicating the significance of co-activation of multiple factors relating to the HC regeneration.

We previously did the single-cell RNA sequencing (scRNA-seq) profiles of converted HCs (cHCs) and endogenous outer HCs (OHCs) after ectopically expressing *Atoh1* in the Deiters' cells (DCs) and Pilliar cells (PCs) at P14. scRNA seq revealed 16 transcription factors that were significantly differentially expressed in the endogenous HCs than in the cHCs. Among which *Isl1* had been demonstrated to be a co-reprogramming factor that promotes *Atoh1*-mediated HC regeneration both ex-vivo and *in vivo* (Yamashita et al., 2018). Several of these 16 transcription factors including *Six2*, *Ikzf2*, *Lbh*, *Arid3b*, *Hmg20a*, *Tub*, *Sall1*, and *Znf532* have been shown the potential for promoting the *Atoh1*-mediated regeneration, while *Lbh*, *Ikzf2*, and *Six2* are the top three highly enriched transcription factors in adult OHCs compared to inner HCs (IHCs) with a fold difference of more than two (Li et al., 2016). *Six2* may participate in complex formation with *Eya1* and *Sox2* for initial *Atoh1* activation (Zhang et al., 2017), and can also interact with *Eya1* to regulate the expansion of the nephron progenitors during nephrogenesis (Xu et al., 2014). *Ikzf2* is a key regulator for the development and fate determination of OHCs (Chessum et al., 2018; Sun et al., 2021). *Lbh* is necessary for the maintenance of stereocilia bundles and the survival of cochlear HCs (Liu et al., 2020). *Arid3b* involves in embryonic development, regulation of cell lineage, and cell cycle control (Kortschak et al., 2000). *Hmg20a* plays a role in neuronal differentiation and can preserve neuronal integrity (Lorenzo et al., 2021). A mutation of *Tub* causes loss of both tectorial membrane-attachment crowns (TM-ACs) and horizontal top connectors (HTCs), leading to severe hearing loss (Han et al., 2020). *Sall1* mutation is responsible for Towners-Brocks syndrome (TBS) by displaying high-frequency sensorineural hearing loss in humans (Yang et al., 2021). *Znf532* is a potential common target of *Stat3* and *Wnt/Pcp* pathways (Savino et al., 2019). The expression of *Tub* and *Znf532* was also regulated by *Isl1* (Liang et al., 2015); *Isl1* is essential for the development of pacemaker cells and helps to

prevent age-related and noise-induced hearing loss (Huang et al., 2013; Liang et al., 2015).

Ectopic HC regeneration occurred in different subtypes of SCs, including greater epithelial ridge (GER), inner border cells (IBCs), inner phalangeal cells (IPhCs), pillar cells (PCs), Deiters' cells (DCs), Hensen's cells, and lesser epithelial ridge (LER) in the organ of Corti after ectopic overexpression of *Atoh1* (Liu et al., 2012, 2021; Richardson and Atkinson, 2015; Walters et al., 2017; Yamashita et al., 2018). *Sox2*, an HMG domain transcription factor, is a marker for the neurosensory domain of the otic placode and is critical for the initiation of progenitor's transdifferentiation to HCs by interacting with the 3' enhancer of *Atoh1*, the expression of *Sox2* decreases to almost absent at P7 in the HCs (Kempfle et al., 2016; Cheng et al., 2019). GER cells are a group of transient cells that will be replaced with inner sulcus cells during the postnatal maturation of the organ of Corti; at neonatal ages, the lateral GER are abundant of *Sox2+* cells which have more plasticity and capacity for transdifferentiation (Kubota et al., 2021), regenerated HCs were acquired by ectopically overexpressing *Atoh1* in GER cells in cultured cochlear explants through electroporation (Zheng and Gao, 2000). All of these indicate that the lateral GER cells can serve as progenitor sources for HC regeneration at neonatal ages.

We hypothesized that *Six2*, *Ikzf2*, *Lbh*, *Arid3b*, *Hmg20a*, *Tub*, and *Sall1* which are differentially expressed between the endogenous HCs and the cHCs and that are highly expressed in the endogenous OHCs might serve as cooperative factors for *Atoh1* mediated HC regeneration. To test our hypothesis, we optimized the cochlear explant electroporation procedure and electroporated these transcription factors alone or together with *Atoh1* to see if anyone of these transcription factors or the combination could induce more regenerated HCs in the GER cells.

## MATERIALS AND METHODS

### Animals

All inbred FVB males and females were purchased from Jackson Laboratory (Stock Number 001800). Breeding pairs were set up to get P0.5 pups for the electroporation. All animals were kept at the animal facility of Creighton University following standard care. The animals were kept under a 12–12 h light-dark cycle at 72–75°F with a normal diet ad libitum. The protocol for all experiments was approved by the Institutional Animal Care and Use Committee (IACUC) of Creighton University.

### Plasmid DNA Preparation

All plasmids were prepared in the lab with EndoFree Plasmid kits (Qiagen, cat#12391) following the manufacturer's protocol. Briefly, the plasmid DNA transformation was done using HD5-alpha competent cells and incubated by shaking in an agar medium to develop antibiotic resistance. The bacterial culture was grown on agar plates and four different colonies were collected for batch culture. After culturing the bacterial particles overnight, particles were pelleted and plasmid preparation was done using a maxi-prep kit from Qiagen following manufacturers' instructions. The yield of plasmid DNA diluted

in HBSS buffer was estimated using Nanodrop 2000 from ThermoScientific. High quality of plasmid was essential for successful transfection. Plasmid solutions were stored at  $-20^{\circ}\text{C}$  and diluted to  $0.5\ \mu\text{g}/\mu\text{l}$  in HBSS (without calcium, magnesium, and phenol red) before being used for electroporation.

## Tissue Cultures and Electroporation

The temporal bones were dissected out immediately after the sacrifice of the neonate and transferred into the iced HBSS (Thermo Scientific, cat#88284). Micro tweezers were used to remove the bony cochlear wall, Reissner's membrane, and spiral ligament to expose the basilar membrane entwining around the modiolus. The isolated cochlea sensory epithelium was transferred to the center of the Millipore filter membrane (Millipore Sigma, PICM03050) using trimmed  $200\ \mu\text{l}$  tips. We used a similar electroMasudaporation method as reported by Masatsugu and made some optimizations (Masuda et al., 2012); we didn't moisten the filter by adding HBSS, the epithelium was submerged in more than  $20\ \mu\text{l}$  HBSS on the filter to avoid dehydration. The epithelium was reset to make sure HCs were facing up, HBSS around the tissue was removed by pipette, and plasmids were added on top of the tissue. The concentration of each plasmid was kept at  $0.5\ \mu\text{g}/\mu\text{l}$  and the total volume of plasmids was kept at  $6\ \mu\text{l}$  for each electroporation to transfect  $3\ \mu\text{g}$  plasmid for each gene in total. The epithelium was electroporated using the electroporator (CUY21EDIT, NEPAGENE) and 2 rectangular pulses ( $12\ \text{V}$ ,  $30\ \text{ms}$  duration with an interval of  $970\ \text{ms}$ ) were applied. The filter with explant was transferred to the 6-well culture plate, plasmid solution was removed, tissue was rinsed with pre-warmed Opti-MEM and left undisturbed in  $1\ \text{ml}$  Opti-MEM for  $1\ \text{min}$ . After removing all the Opti-MEM,  $1.5\ \text{ml}$  pre-warmed culture medium (DMEM/F12, 10% fetal bovine serum, 1% N-2 supplement, 2% B-27 supplement,  $50\ \mu\text{g}/\text{ml}$  ampicillin) was added to the well, and  $200\ \mu\text{l}$  culture media was added to the filter, the first drop of the media was added directly on top of the tissue so that the tissue wouldn't float off. The explants were cultured in the incubator with 5%  $\text{CO}_2$  and 95% humidity at  $37^{\circ}\text{C}$  for several days, and the culture media was changed every  $24\ \text{h}$ .

## Immunofluorescence Analysis

Explants were collected 2, 3, 4, and 6 days after the electroporation and fixed in 4% Paraformaldehyde (cat#15710, Electron Microscopy Sciences) for 15 mins; the tissues were then blocked for  $1\ \text{h}$  in 0.2% Triton X-100 and 10% (v/v) heat-inactivated goat serum in PBS. Tissues were then incubated with the primary antibodies overnight at  $4^{\circ}\text{C}$  and corresponding secondary antibodies for  $2\ \text{h}$  at room temperature. The following primary antibodies were used: anti myosinVI (1:400, cat #25-6791, Proteus Bioscience), anti-GFP (1:400 cat # A10262 Invitrogen). All secondary antibodies were purchased from Invitrogen and used at a 1:800 dilution. DAPI (4',6-diamidino-2-phenylindole) was used to counterstain the nucleus at 1:1,000 dilutions (Cat#D1306, Invitrogen).

## Quantification and Statistical Analyses

All images were taken by Zeiss LSM 700 confocal microscope to minimize the variation among samples. All slides were examined

by confocal microscopy using the  $10\times$  lens to locate the apical-middle turn of the explant, then turn to  $40\times$  lens for taking the Z-stack images at a  $1\text{-}\mu\text{m}$  interval. All original files were analyzed using the software ZEN (black edition). Transfected GER cells within  $70\ \mu\text{m}$  distance from the endogenous HCs were counted; we excluded PCs that were adjacent to the endogenous HCs and occasionally transfected. GFP+ cells were counted as transfected cells, the GFP+/MyoVI+ cells in the GER region were counted as converted HCs (cHCs), and GFP-/MyoVI+ cells were counted as endogenous HCs. Three explants were inspected per electroporation. All data analysis was performed using one-way ANOVA and the Student's t-test with a Bonferroni correction in Graphpad Prism 9.0.

## RESULT

### Gene Delivery by Electroporation Is Efficient in Transfecting Sox2+ Lateral GER Cells

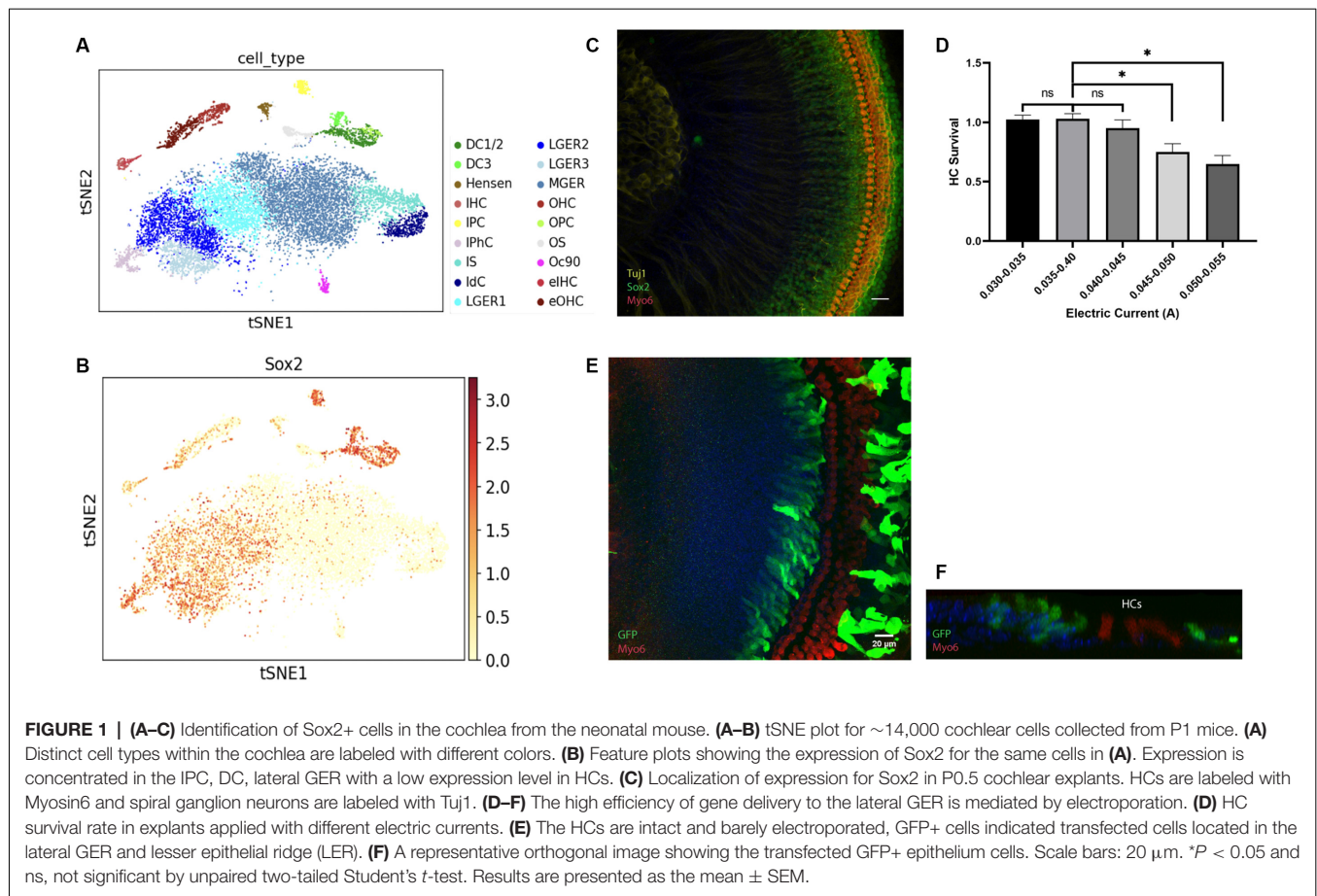
HCs are developed from the Sox2+ progenitor cells in the prosensory domain at the embryonic stage (Kempfle et al., 2016). We first used Kolla et al's scRNA-seq data from postnatal day 1 (P1) mice to validate the Sox2+ cell population at P1 (Kolla et al., 2020). As shown in **Figures 1A,B** generated using gEAR Portal, DCs, IPhCs, and lateral GER cells are all Sox2+ while some of the endogenous HCs also have low Sox2 levels (Walters et al., 2015; Orvis et al., 2021).

We then examined the Sox2+ progenitors in the GER at P0.5, within the organ of Corti. Sox2 is expressed in the SCs and lateral GER cells within  $70\ \mu\text{m}$  distance from the endogenous HCs and its expression level gradually decreases in the GER area away from the endogenous HCs (**Figure 1C**), which is similar to previous studies (Dabdoub et al., 2008; Kubota et al., 2021). As the lateral GER is abundant in Sox2+ progenitors, they are excellent target cells for electroporation for the HC regeneration study.

Electroporation-based gene delivery has been widely performed in different tissues (Kawabata et al., 2004; Voyer et al., 2018) as it is an efficient approach. The cochlear explant electroporation has been reported (Zheng and Gao, 2000; Driver and Kelley, 2010); here we further optimized the protocol to increase the stability and minimize the variability of the results. The plasmid encoding GFP driven by a constitutive (CMV) promoter was used for evaluating the location and efficiency of gene delivery by electroporation. The cochlear basilar membranes were dissected out from P0.5 FVB pups and transfected with the GFP plasmid. The cochlear explants were then cultured for 3 days and harvested for GFP staining to visualize the transfected cells. Myosin6 staining was used to detect the endogenous HC distribution in the explant. We found that even when the parameters were set up identically, the transfection efficiency and HC viability varied, and the viability of HCs decreased when the electric currents were higher than  $0.045\ \text{amperes (A)}$  (**Figure 1D**).

When electric currents were controlled within  $0.030\text{--}0.045\ \text{A}$ , strikingly, we found most of the transfected cells in cochlear





explants were preferentially located in the Sox2+ lateral GER, and few endogenous cells were transfected (Figure 1E). All the transfected GFP+ GER cells were not Myo6+, which means none could transdifferentiate to Myo6+ cells spontaneously. Orthogonal images also showed that transfected cells in the GER were just medial to endogenous HCs and located on the surface of the epithelium (Figure 1F).

### Atoh1 Ectopic Expression Promoted HC Regeneration in Sox2+ GER Cells

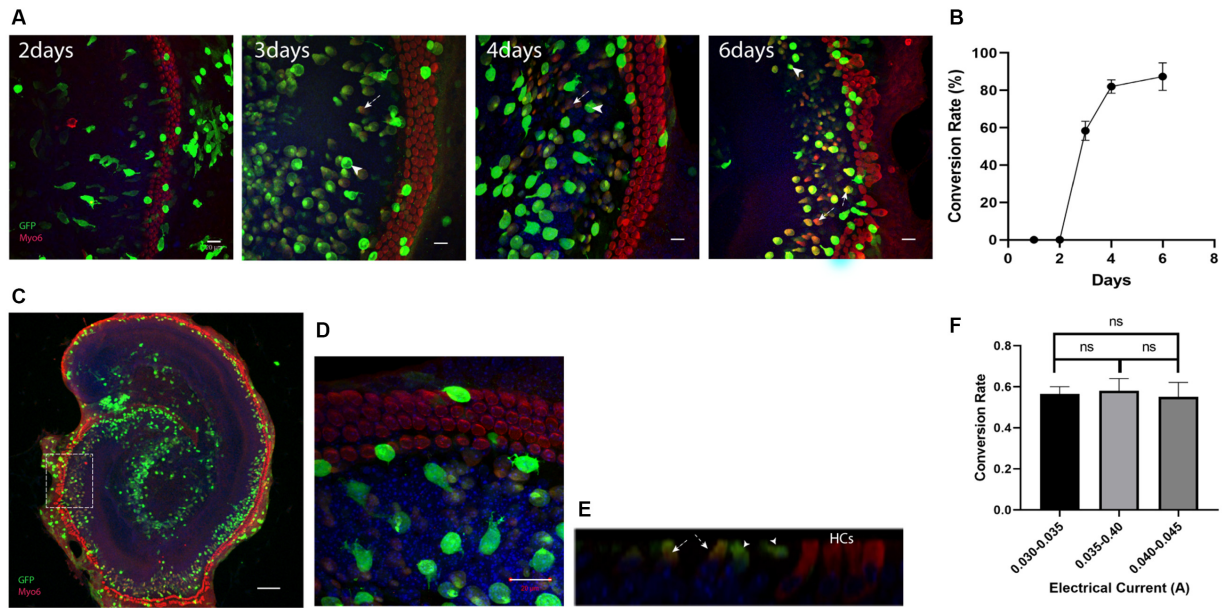
Atoh1 has been reported as a key factor for HC regeneration at neonatal age (Zheng and Gao, 2000; Chen et al., 2013). To confirm the efficiency of regeneration using this electroporation method, cochlear explants were electroporated with the Atoh1-eGFP plasmid. The number and duration of electric pulses or other parameters applied to the tissue were identical for all experiments. Electric currents were restricted within 0.03–0.045 A. The GER cells labeled with anti-GFP antibodies were transfected cells, and the double labeling cells with anti-GFP and anti-Myo6 antibodies were regarded as cHCs (Figure 2).

To detect the gradual change of conversion rates after the electroporation, we performed immunostaining 2, 3, 4, and 6 days after the electroporation. At 2 days after the electroporation, none of the transfected cells expressed Myosin6, the cHCs appeared at 3 days after the electroporation. Just

like the electroporation for eGFP plasmid, 6 days after the electroporation, most of the transfected cells were concentrated in the Sox2+ lateral GER region (Figure 2C). We then analyzed the transfected lateral GER cells within a 70 μm distance from the endogenous HCs for calculating the conversion rate. We could see the conversion rate gradually increased and cHCs migrated much closer to the endogenous HCs 6 days after the electroporation (Figures 2A,B). Three days after the electroporation, the conversion rate was around 60% and we chose 3 days after the electroporation as the time point for testing other TFs, because we could detect any increase or decrease of the conversion rate easily with additional factors. The conversion rate of the transfected cells had no statistical difference between different explants when the current was below 0.045A (Figure 2F).

### Tub and ZNF532 Promote the Conversion Mediated by Atoh1 in Lateral GER

We tested multiple transcription factors including Six2, Ikzf2, Lbh, Arid3b, Hmg20a, Tub, and Sall1 which are expressed highly in the HCs and differentially compared to the cHCs (Yamashita et al., 2018) and are also potential co-reprogramming factors for Atoh1-mediated SC-to-HC conversion by literature review. To test our hypothesis, we first electroporated the explants with these individual transcription factors alone; all plasmids used for



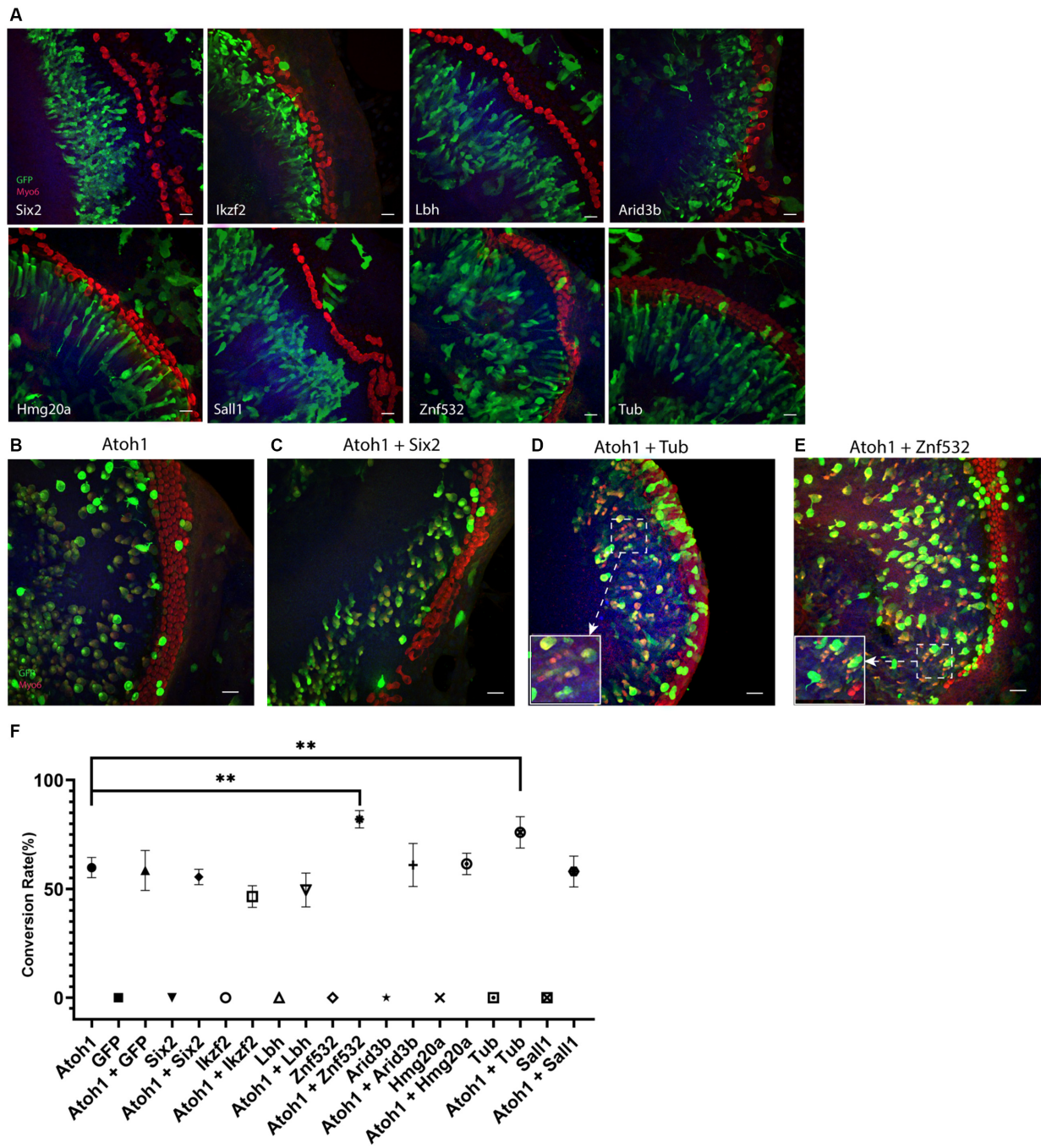
**FIGURE 2 |** Ectopic expression of Atoh1 leads to the new Myosin6 expressing cells in lateral GER. **(A)** Morphological images of Atoh1-eGFP plasmids transfected explants at 2, 3, 4, and 6 days after the electroporation. The image for 6th day is an enlarged image of the white square in panel **(C)**. GFP+ cells indicate the transfected cells and GFP+/Myo6+ cells in lateral GER indicate the Myo6 expressing cHCs after the ectopic expression of Atoh1. There were no cHCs 2 days after the electroporation, more cHCs were observed from day 3 to day 6, and the transfected cells were gradually getting closer to endogenous HCs. **(B)** The percentage of GFP+/Myo6+ cells vs. all GFP+ cells in lateral GER (conversion rate) gradually increases from day 2 to day 10 after the electroporation. **(C)** Typical Atoh1-eGFP plasmid transfected cochlear explant showing most of the transfected cells were localized in the lateral GER, Scale bar = 100  $\mu$ m. High-resolution image **(D)** and ortho image **(E)** showing the transfected epithelium cells. **(F)** The conversion rate of transfected cells with different electric currents. The arrows pointed to GFP single positive cells which are the transfected cells that failed to transdifferentiate, the arrowheads pointed to the GFP, Myosin6 double-positive cells which are the cHCs. Scale bar = 20  $\mu$ m. ns, not significant by unpaired two-tailed Student's *t*-test. Results are presented as the mean  $\pm$  SEM.

the electroporation was 0.5  $\mu$ g/ $\mu$ l, the total volume of plasmids for each gene was 6  $\mu$ l. To get higher transfection efficiency and better explore the transdifferentiation capacity of each of these transcription factors, electric current was not restricted below 0.045 A and all explants were cultured for 4 days after the electroporation. The cochlear explants were similar to GFP plasmid transfected explants and none of the transfected GER cells were Myo6+. This suggests that none of these transcription factors alone have the capacity to convert Sox2+ GER cells to Myo6-expressing cHCs (**Figure 3A**).

Co-electroporations of Atoh1 with each of these transcription factors were performed where the concentration of the plasmid of either Atoh1-GFP or tested transcription factors was 0.5  $\mu$ g/ $\mu$ l and 6  $\mu$ l was used for the electroporation. The explants were imaged 3 days after the electroporation (**Figures 3B–E**). We analyzed all transfected lateral GER cells within a 70  $\mu$ m distance from the endogenous HCs for all groups. The conversion rates of either different genes alone or different combinations are shown separately (**Figure 3F**). Atoh1 alone induced about 60% transfected cells to be Myosin6+ cHCs, co-electroporation of Atoh1 with Tub or Znf532 significantly increased the conversion rate in lateral GER whereas all other combinations of transcription factors with Atoh1 failed to change the conversion rate of Atoh1 alone.

## DISCUSSION

HC regeneration is one of the ideal treatment strategies for hearing recovery. The co-manipulation of multiple transcription factors has been proved to be critical for efficient HC regeneration (Masuda et al., 2012; Walters et al., 2017; Chen et al., 2021), and more studies are needed to find more gene targets. Gene delivery methods for the inner ear cells include viral vector-based-transduction and non-viral vector-based transfection (Sacheli et al., 2013). Plasmid electroporation for cochlear explants has been developed and performed in embryonic and neonatal mice as it is convenient and efficient for gene delivery; however, there are still some barriers that limit its use. In our study, we optimized and improved the procedure in the following aspects. We minimized the time for the whole procedure; this requires the experimenter to have high anatomical skills. The tendency of the tissues to float off the incubation surface has been discussed previously (Parker et al., 2010). Instead of culturing cochlear explants on the polyornithine/laminin-coated glass coverslips, we utilized the Millipore filter membrane to mimic the *in vivo* environment for the organ of Corti. The cochlear tissue was placed on the membrane after being dissected out until the fixation. A small part of the filter membrane with explant was cut off with a micro scalpel and used for immunofluorescence analysis. We found the



**FIGURE 3 | (A)** Forced transcription factor expression alone in lateral GER cells didn't lead to any conversion. **(B–E)** Ectopic expression of Tub or Znf532 promotes the Atoh1 mediated conversion in lateral GER. **(C)** A representative negative control showing Six2 failed to promote the Atoh1 mediated conversion. **(D,E)** The explants shown were transfected with combinations of Atoh1 + Tub and Atoh1 + Znf532. **(F)** Statistical data showed that there are significant increases in the conversion rate with Atoh1 + Znf532 and Atoh1 + Tub compared with Atoh1 alone. Scale bar = 20 μm. \*\**P* < 0.01 by unpaired two-tailed Student's *t*-test. Results are presented as the mean ± SEM.

cochlear explants attached to the membrane very well and barely float off.

Given that Sox2+ progenitor cells at neonatal ages have high plasticity and capacity for transdifferentiation, studies have been done to isolate the Sox2+ cells from neonatal mice, and the

isolated progenitor cells were either cultured to organoids or directly used for further study (Kempfle et al., 2016; Kubota et al., 2021). The utilization of unisolated *in situ* Sox2+ cells for regeneration research has additional advantages as the intact organ of Corti mimics the *in vivo* condition. As our purpose was



to transfect the single layer of Sox2+ lateral GER cells located on the surface of the cochlear sensory epithelium, the electric current was controlled to below 0.045 A, a very low electric current level, by adjusting the distance of anode and cathode. We minimized the damage of electroporation and ensured that the transfected cells are almost all Sox2+ lateral GER cells. The expression of Myo6 takes less than 2 days after the initiation of Atoh1 during the development of organ of Corti (Driver et al., 2013). However, at 2 days after the electroporation, none of the transfected cells expressed Myosin6, which means the transdifferentiation *in vitro* takes more time compared to the normal developmental process.

The combinations of multiple transcription factors have been proved as necessary for fate determination and efficient HC regeneration. Isl1 is a transcription factor that can promote the Atoh1 mediated HC regeneration *ex vivo* (identical to our explant transfection assays reported here), and it has been further proven in a transgenic overexpression mouse model that Isl1 does promote Atoh1-mediated HC conversion *in vivo*, further validating our explant assays. Moreover, the overexpression of Isl1 in HCs can also help to prevent age-related and noise-induced hearing loss (Huang et al., 2013; Yamashita et al., 2018). Strikingly, the two transcription factors (Tub, Znf532) we identified here as cofactors for Atoh1 mediated conversion are also regulated by Isl1 (Mu et al., 2008; Liang et al., 2015). The Tub transcription factor is critical for the normal function of TM-ACs and HTCs. Stat3 signaling has been demonstrated to regulate the HC regeneration in zebrafish, and both Stat3 and Wnt/PCP pathways play important roles in mouse HC differentiation (Montcouquiol and Kelley, 2003; Liang et al., 2012; Waqas et al., 2016; Chen et al., 2017), interestingly, Znf532 is a potential common target of Stat3 and Wnt/Pcp pathways. All of these suggest that the interplay of Isl1, Tub, Znf532, Stat3, and Wnt/Pcp pathways play essential roles in HC regeneration and possibly other regenerative systems. As the newly identified transcription factors Tub/Znf532 are regulated by Isl1, further studies will be warranted to explore

the function of the Isl1/Tub/Znf532 pathway during HC regeneration.

In conclusion, our studies reveal an optimized electroporation method that can transfect the Sox2+ lateral GER cells efficiently with minimal damage to the endogenous HCs. Our results also indicate the importance of the Isl1/Tub/Znf532 pathway in promoting the Atoh1-mediated HC regeneration.

## DATA AVAILABILITY STATEMENT

The raw data supporting the conclusions of this article will be made available by the authors, without undue reservation.

## ETHICS STATEMENT

The animal study was reviewed and approved by Institutional Animal Care and Use Committee (IACUC) of Creighton University.

## AUTHOR CONTRIBUTIONS

ZX, VR, and JZ conceived the experiments. ZX and VR performed experiments. ZX performed data analyses, prepared figures, and wrote the manuscript. All authors contributed to the article and approved the submitted version.

## FUNDING

This work was supported in part by ONR-N00014-18-1-2507, NIHR01DC015010, NIHR01DC015444, USAMRMC-RH170030, and LB/Creighton.

## ACKNOWLEDGMENTS

We thank the Zuo lab members for their critical comments and technical assistance.

## REFERENCES

- Chen, Y., Gu, Y., Li, Y., Li, G.-L., Chai, R., Li, W., et al. (2021). Article generation of mature and functional hair cells by co-expression of Gfi1, Pou4f3 and Atoh1 in the postnatal mouse cochlea. *Cell Rep.* 35:109016. doi: 10.1016/j.celrep.2021.109016
- Chen, Q., Quan, Y., Wang, N., Xie, C., Ji, Z., He, H., et al. (2017). Inactivation of STAT3 signaling impairs hair cell differentiation in the developing mouse cochlea. *Stem Cell Rep.* 9, 231–246. doi: 10.1016/j.stemcr.2017.05.031
- Chen, Y., Yu, H., Zhang, Y., Li, W., Lu, N., Ni, W., et al. (2013). Cotransfection of Pax2 and Math1 promote *in situ* cochlear hair cell regeneration after neomycin insult. *Sci. Rep.* 3:2996. doi: 10.1038/srep02996
- Cheng, C., Wang, Y., Guo, L., Lu, X., Zhu, W., Muhammad, W., et al. (2019). Age-related transcriptome changes in Sox2+ supporting cells in the mouse cochlea. *Stem Cell Res. Ther.* 10:365. doi: 10.1186/s13287-019-1437-0
- Chessum, L., Matern, M. S., Kelly, M. C., Johnson, S. L., Ogawa, Y., Milon, B., et al. (2018). Helios is a key transcriptional regulator of outer hair cell maturation. *Nature* 563, 696–724. doi: 10.1038/s41586-018-0728-4
- Cox, B. C., Chai, R., Lenoir, A., Liu, Z., Zhang, L., Nguyen, D.-H., et al. (2014). Spontaneous hair cell regeneration in the neonatal mouse cochlea *in vivo*. *Development* 141:1599. doi: 10.1242/dev.109421
- Dabdoub, A., Puligilla, C., Jones, J. M., Fritsch, B., Cheah, K. S. E., Pevny, L. H., et al. (2008). Sox2 signaling in prosensory domain specification and subsequent hair cell differentiation in the developing cochlea. *Proc. Natl. Acad. Sci. U S A* 105, 18395–18401. doi: 10.1073/pnas.0808175105
- Driver, E. C., and Kelley, M. W. (2010). Transfection of mouse cochlear explants by electroporation. *Curr. Protoc. Neurosci.* 51:4.34.1. doi: 10.1002/0471142301.ns0434s51
- Driver, E. C., Sillers, L., Coate, T. M., Rose, M. F., and Kelley, M. W. (2013). The Atoh1-lineage gives rise to hair cells and supporting cells within the mammalian cochlea. *Dev. Biol.* 376, 86–98. doi: 10.1016/j.ydbio.2013.01.005
- Haile, L. M., Kamenov, K., Svitil Briant, P., Orji, A. U., Steinmetz, J. D., Abdoli, A., et al. (2021). Hearing loss prevalence and years lived with disability, 1990–2019: findings from the global burden of disease study 2019. *Lancet* 397, 996–1009. doi: 10.1016/S0140-6736(21)00516-X
- Han, W., Shin, J.-O., Ma, J.-H., Min, H., Jung, J., Lee, J., et al. (2020). Distinct roles of stereociliary links in the nonlinear sound processing and noise resistance of cochlear outer hair cells. *Proc. Natl. Acad. Sci. U S A* 117, 11109–11117. doi: 10.1073/pnas.1920229117
- Huang, M., Kantardzhieva, A., Scheffer, D., Liberman, M. C., and Chen, Z. Y. (2013). Hair cell overexpression of Islet1 reduces age-related and noise-induced hearing loss. *J. Neurosci.* 33, 15086–15094. doi: 10.1523/JNEUROSCI.1489-13.2013

- Kawabata, I., Umeda, T., Yamamoto, K., and Okabe, S. (2004). Electroporation-mediated gene transfer system applied to cultured CNS neurons. *Neuroreport* 15, 971–975. doi: 10.1097/00001756-200404290-00008
- Kempfle, J. S., Turban, J. L., and Edge, A. S. B. (2016). Sox2 in the differentiation of cochlear progenitor cells. *Sci. Rep.* 6:23293. doi: 10.1038/srep23293
- Kolla, L., Kelly, M. C., Mann, Z. F., Anaya-Rocha, A., Ellis, K., Lemons, A., et al. (2020). Characterization of the development of the mouse cochlear epithelium at the single cell level. *Nat. Commun.* 11:2389. doi: 10.1038/s41467-020-16113-y
- Kortschak, R. D., Tucker, P. W., and Saint, R. (2000). ARID proteins come in from the desert. *Trends Biochem. Sci.* 25, 294–299. doi: 10.1016/s0968-0004(00)01597-8
- Kubota, M., Scheibinger, M., Jan, T. A., and Heller, S. (2021). Greater epithelial ridge cells are the principal organoid-forming progenitors of the mouse cochlea. *Cell Rep.* 34:108646. doi: 10.1016/j.celrep.2020.108646
- Lee, S., Jeong, H.-S., and Cho, H.-H. (2017). Atoh1 as a coordinator of sensory hair cell development and regeneration in the cochlea. *Chonnam Med. J.* 53, 37–46. doi: 10.4068/cmj.2017.53.1.37
- Li, Y., Liu, H., Barta, C. L., Judge, P. D., Zhao, L., Zhang, W. J., et al. (2016). Transcription factors expressed in mouse cochlear inner and outer hair cells. *PLoS One* 11:e0151291. doi: 10.1371/journal.pone.0151291
- Liang, J., Wang, D., Renaud, G., Wolfsberg, T. G., Wilson, A. F., and Burgess, S. M. (2012). The Stat3/Socs3a pathway is a key regulator of hair cell regeneration in zebrafish Stat3/Socs3a pathway: regulator of hair cell regeneration. *J. Neurosci.* 32, 10662–10673. doi: 10.1523/JNEUROSCI.5785-10.2012
- Liang, X., Zhang, Q., Cattaneo, P., Zhuang, S., Gong, X., Spann, N. J., et al. (2015). Transcription factor ISL1 is essential for pacemaker development and function. *J. Clin. Invest.* 125, 3256–3268. doi: 10.1172/JCI68257
- Liu, Z., Dearman, J. A., Cox, B. C., Walters, B. J., Zhang, L., Ayrault, O., et al. (2012). Age-dependent *in vivo* conversion of mouse cochlear pillar and deiters' cells to immature hair cells by atoh1 ectopic expression. *J. Neurosci.* 32, 6600–6610. doi: 10.1523/JNEUROSCI.0818-12.2012
- Liu, H., Giffen, K. P., Morrill, S. W., Li, Y., Liu, X., Briegel, K. J., et al. (2021). Transcription co-factor LBH1s necessary for maintenance of stereocilia bundles and survival of cochlear hair cells. *J. Cell Sci.* 134:jcs254458. doi: 10.1242/jcs.254458
- Liu, L.-M., Zhao, L.-P., Wu, L.-J., Guo, L., Li, W.-Y., and Chen, Y. (2020). Characterization of the transcriptomes of *Atoh1*-induced hair cells in the mouse cochlea. *Am. J. Stem Cells* 9, 1–15.
- Lorenzo, P. I., Vazquez, E. M., López-Noriega, L., Fuente-Martín, E., Mellado-Gil, J. M., Muñoz Franco, J., et al. (2021). The metabesity factor HMG20A potentiates astrocyte survival and reactive astrogliosis preserving neuronal integrity. *Theranostics* 11, 6983–7004. doi: 10.7150/tno.57237
- Masuda, M., Pak, K., Chavez, E., and Ryan, A. F. (2012). TFE2 and GATA3 enhance induction of POU4F3 and myosin VIIa positive cells in nonsensory cochlear epithelium by ATOH1. *Dev. Biol.* 372, 68–80. doi: 10.1016/j.ydbio.2012.09.002
- Montcouquiol, M., and Kelley, M. W. (2003). Planar and vertical signals control cellular differentiation and patterning in the mammalian cochlea. *J. Neurosci.* 23, 9469–9478. doi: 10.1523/JNEUROSCI.23-28-09469.2003
- Mu, X., Fu, X., Beremand, P. D., Thomas, T. L., and Klein, W. H. (2008). Gene-regulation logic in retinal ganglion cell development: Isl1 defines a critical branch distinct from but overlapping with Pou4f2. *Proc. Natl. Acad. Sci. U S A* 105, 6942–6947. doi: 10.1073/pnas.0802627105
- Orvis, J., Gottfried, B., Kancherla, J., Adkins, R. S., Song, Y., Dror, A. A., et al. (2021). GEAR: gene expression analysis resource portal for community-driven, multi-omic data exploration. *Nat. Methods* 18, 843–844. doi: 10.1038/s41592-021-01200-9
- Parker, M., Brugeaud, A., and Edge, A. S. B. (2010). Primary culture and plasmid electroporation of the murine organ of Corti. *J. Vis. Exp.* 36:1685. doi: 10.3791/1685
- Richardson, R. T., and Atkinson, P. J. (2015). Atoh1 gene therapy in the cochlea for hair cell regeneration. *Expert Opin. Biol. Ther.* 15, 417–430. doi: 10.1517/14712598.2015.1009889
- Sacheli, R., Delacroix, L., Vandenackerveken, P., Nguyen, L., and Malgrange, B. (2013). Gene transfer in inner ear cells: a challenging race. *Gene Ther.* 20, 237–247. doi: 10.1038/gt.2012.51
- Savino, A., Avalle, L., Monteleone, E., Miglio, I., Griffa, A., Accetta, G., et al. (2019). Network analysis allows to unravel breast cancer molecular features and to identify novel targets. *BioRxiv* [Preprint]. doi: 10.1101/70051
- Sun, S., Li, S., Luo, Z., Ren, M., He, S., Wang, G., et al. (2021). Dual expression of Atoh1 and Ikzf2 promotes transformation of adult cochlear supporting cells into outer hair cells. *eLife* 10:e66547. doi: 10.7554/eLife.66547
- Voyer, D., Silve, A., Mir, L. M., Scorretti, R., and Poignard, C. (2018). Dynamical modeling of tissue electroporation. *Bioelectrochemistry* 119, 98–110. doi: 10.1016/j.bioelechem.2017.08.007
- Walters, B. J., Coak, E., Dearman, J., Bailey, G., Yamashita, T., Kuo, B., et al. (2017). *in vivo* interplay between P27<sup>Kip1</sup>, GATA3, ATOH1, and POU4F3 converts non-sensory cells to hair cells in adult mice. *Cell Rep.* 19, 307–320. doi: 10.1016/j.celrep.2017.03.044
- Walters, B. J., Yamashita, T., and Zuo, J. (2015). Sox2-CreER mice are useful for fate mapping of mature, but not neonatal, cochlear supporting cells in hair cell regeneration studies. *Sci. Rep.* 5:11621. doi: 10.1038/srep11621
- Waqas, M., Zhang, S., He, Z., Tang, M., and Chai, R. (2016). Role of Wnt and notch signaling in regulating hair cell regeneration in the cochlea. *Front. Med.* 10, 237–249. doi: 10.1007/s11684-016-0464-9
- Whitfield, T. T. (2015). Development of the inner ear. *Curr. Opin. Genet. Dev.* 32, 112–118. doi: 10.1016/j.gde.2015.02.006
- Xu, J., Wong, E. Y. M., Cheng, C., Li, J., Sharkar, M. T. K., Xu, C. Y., et al. (2014). Eya1 interacts with Six2 and Myc to regulate expansion of the nephron progenitor pool during nephrogenesis. *Dev. Cell* 31, 434–447. doi: 10.1016/j.devcel.2014.10.015
- Yamashita, T., Zheng, F., Finkelstein, D., Kellard, Z., Robert, C., Rosencrance, C. D., et al. (2018). High-resolution transcriptional dissection of *in vivo* Atoh1-mediated hair cell conversion in mature cochleae identifies isl1 as a co-regulating factor. *PLoS Genet.* 14:e1007552. doi: 10.1371/journal.pgen.1007552
- Yang, G., Yin, Y., Tan, Z., Liu, J., Deng, X., and Yang, Y. (2021). Whole-exome sequencing identified a novel heterozygous mutation of sall1 and a new homozygous mutation of PTPRQ in a chinese family with townes-brocks syndrome and hearing loss. *BMC Med. Genomics* 14:24. doi: 10.1186/s12920-021-00871-9
- Youm, I., and Li, W. (2018). Cochlear hair cell regeneration: an emerging opportunity to cure noise-induced sensorineural hearing loss. *Drug Discov. Today* 23, 1564–1569. doi: 10.1016/j.drudis.2018.05.001
- Zhang, T., Xu, J., Maire, P., and Xu, P. X. (2017). Six1 is essential for differentiation and patterning of the mammalian auditory sensory epithelium. *PLoS Genet.* 13:e1006967. doi: 10.1371/journal.pgen.1006967
- Zheng, J. L., and Gao, W. Q. (2000). Overexpression of math1 induces robust production of extra hair cells in postnatal rat inner ears. *Nat. Neurosci.* 3, 580–586. doi: 10.1038/75753
- Zheng, F., and Zuo, J. (2017). Cochlear hair cell regeneration after noise-induced hearing loss: does regeneration follow development? *Hear. Res.* 349, 182–196. doi: 10.1016/j.heares.2016.12.011

**Conflict of Interest:** The authors declare that the research was conducted in the absence of any commercial or financial relationships that could be construed as a potential conflict of interest.

**Publisher's Note:** All claims expressed in this article are solely those of the authors and do not necessarily represent those of their affiliated organizations, or those of the publisher, the editors and the reviewers. Any product that may be evaluated in this article, or claim that may be made by its manufacturer, is not guaranteed or endorsed by the publisher.

Copyright © 2021 Xu, Rai and Zuo. This is an open-access article distributed under the terms of the Creative Commons Attribution License (CC BY). The use, distribution or reproduction in other forums is permitted, provided the original author(s) and the copyright owner(s) are credited and that the original publication in this journal is cited, in accordance with accepted academic practice. No use, distribution or reproduction is permitted which does not comply with these terms.